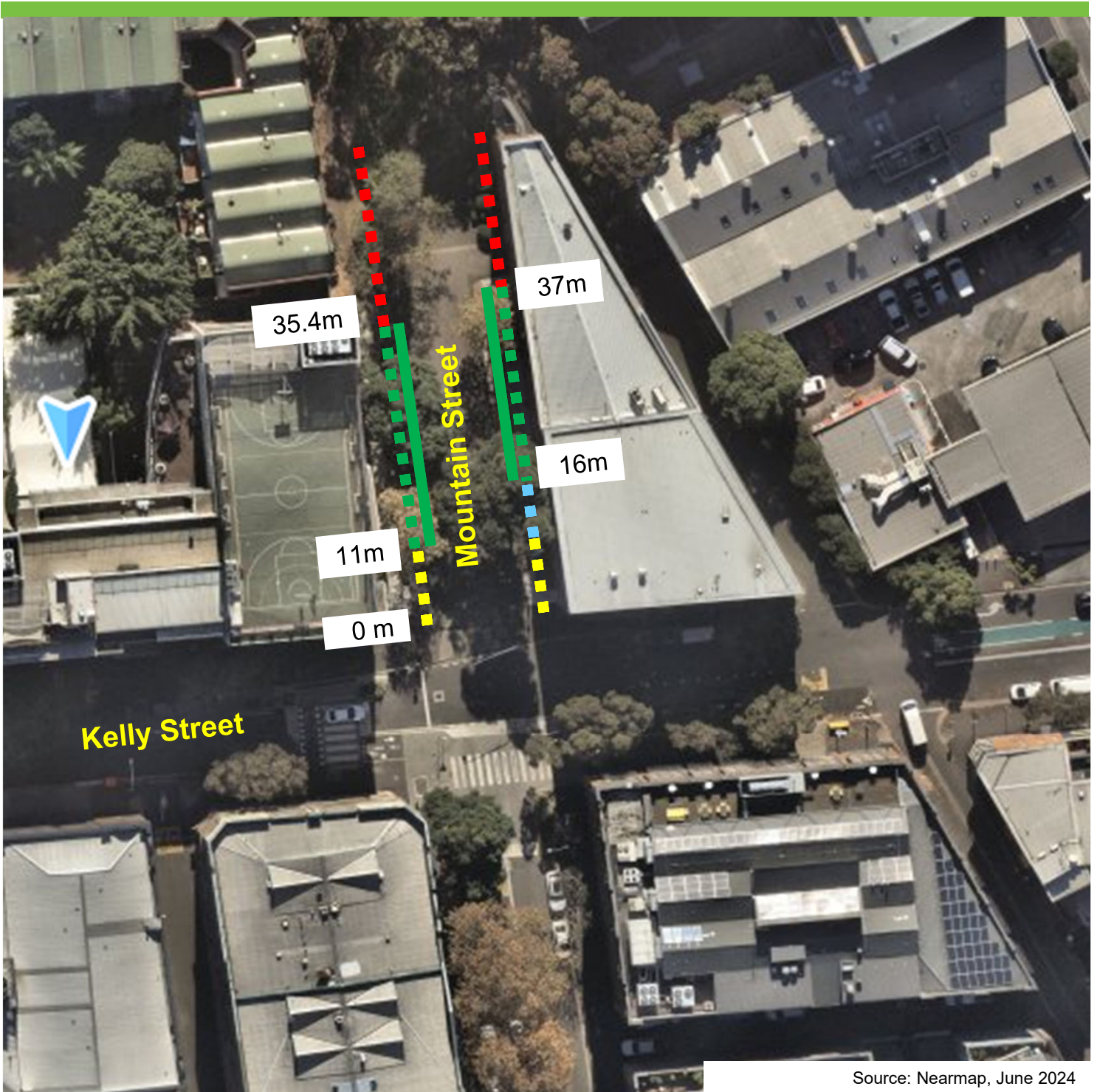


## Mountain Street, Ultimo Proposed parking changes



Source: Nearmap, June 2024

### Existing

- ■ ■ No Stopping
- ■ ■ 1/4P Ticket 7-9:30am, 2:30pm-4pm Mon-Fri  
2P Ticket 9:30am-2:30pm, 4-10pm Mon-Fri, 8am-10pm Sat, Sun and Public Holidays
- ■ ■ 90° Angle Parking Rear to Kerb  
1/4P Ticket 7-9:30am, 2:30pm-4pm Mon-Fri  
2P Ticket 9:30am-2:30pm, 4-10pm Mon-Fri, 8am-10pm Sat, Sun and Public Holidays
- ■ ■ No Parking      ■ ■ ■ No Parking Car Share Vehicles Excepted

### Proposed

- ■ ■ 1/4P Ticket  
7-9:30am, 2:30pm-6pm Mon-Fri  
2P Ticket 9:30am-2:30pm, 6-10pm Mon-Fri, 8am-10pm Sat, Sun and Public Holidays
- ■ ■ 90° Angle Parking Rear to Kerb  
1/4P Ticket  
7-9:30am, 2:30pm-6pm Mon-Fri  
2P Ticket 9:30am-2:30pm, 6-10pm Mon-Fri, 8am-10pm Sat, Sun and Public Holidays

